

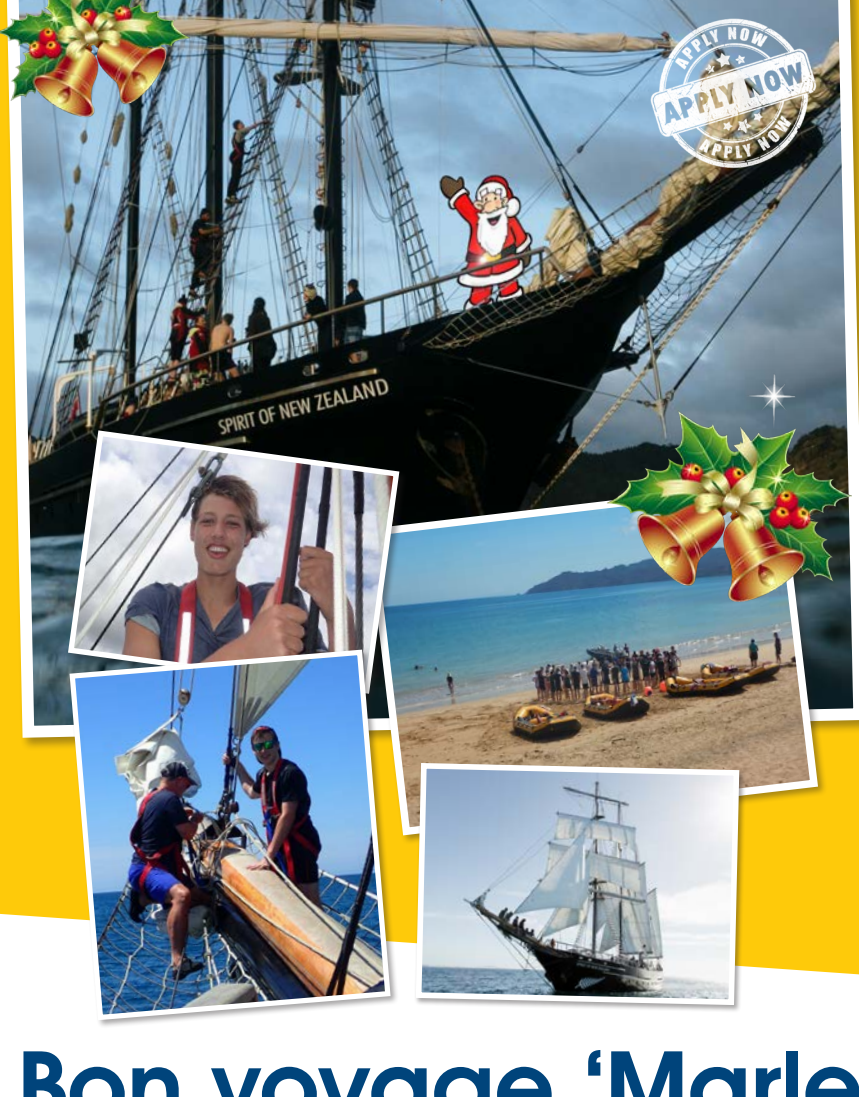


docklines

THE NEWSLETTER OF HALF MOON BAY MARINA

HALF
MOON
BAY
marinaFind us on
Facebook

www.hmbmarina.co.nz



We are sailing ... we are sailing

A voyage on Spirit of New Zealand can change a young life.

Once again Half Moon Bay Marina is proud to offer berth-holders and other Marina connections the opportunity to give a youngster an incredible adventure with a 10-day voyage aboard the international award-winning training ship 'Spirit of New Zealand'.

Each voyage on this world-renowned youth development programme, value \$2400, is designed to give 40 young New Zealanders, 16 to 18, the learning adventure of a lifetime and a chance to reach their full potential through the challenge of the sea. It's a life-changing experience leaving them ready to face their future!

They'll come home with a whole new set of skills, new friends, the confidence to take on life's challenges and a new sense of self-empowerment!

Act now! Applications closing soon

More details and application form on back page

Bon voyage 'Marlena'

The salvage vessel at the Marina for the past 28 years, first with long-time boat builder Peter Millen and then for Joe Richardson who bought Peter's business, left us recently. The economics and regulations made this service too difficult to continue. Here she is off to Napier in care of Exclusive Boat Haulage

*...good bye Marlena,
you'll be missed*



inside

Holiday operating hours & check list • New taste in town

Your Holiday Check List

Renting your berth these holidays?

1. Let us know - now!

Take advantage of the holiday demand for rental berths. We have a constant call for berths during the summer. But the earlier you advise us the more likely we are to rent it.

Please EMAIL the dates that your berth is available –

To: Customer Services Office:

leila@hmbmarina.co.nz

Or call us on 534 3139.

2. Are you renting privately?

You MUST supply us with full contact details of the renter - AND the insurance company that covers the boat while it is in your berth!

3. If you decide to return home earlier than planned

Give us time to clear your berth. Please call us on 534 3139 or VHF channel 73, both of which are monitored 24/7, to advise of your new return date.

4. Stow your berth lines when renting

It's easy for a departing renter to take the lines you might leave on the berth. Stow your good gear and leave only adequate lines for temporary use!

Before you go away

1. Please park your vehicle away from the vicinity of the pier gate.

If you are leaving your berth for an extended period a little common courtesy will make access easier for your pier neighbours who remain using their berths.

2. Current Parking Passes MUST be displayed

We will be monitoring all dedicated parking zones in the Marina. In the highest usage period of the year we want berth-holders and their guests to find parking space where there should be parking space!

PLEASE NOTE: IF THE CORRECT PARKING PASS IS NOT CLEARLY DISPLAYED THE VEHICLE WILL BE REMOVED!

Only these passes are to be shown

3. Update your Marina contact data

It is essential that we have your up-to-date contact numbers when you are away! If a vehicle alarm goes off and the owner cannot be contacted, the vehicles WILL BE TOWED and owners WILL BE LIABLE for any costs. If you intend to be away leaving a vehicle on the property please call Customer Services to ensure we have the correct information!

4. Padlock your power modules

We recommend you pad-lock your dedicated module while you are away cruising. Surprisingly there are some who have no hesitation in plugging in and helping themselves to your supply! (Those on piers with new power facilities installed should call Customer Services who will arrange switch-off.)

5. Please return pier trolleys to the pier gate

Another reminder - not just in the holidays but always. Please consider your fellow boaties and return the trolleys after you have finished loading or unloading your boat.

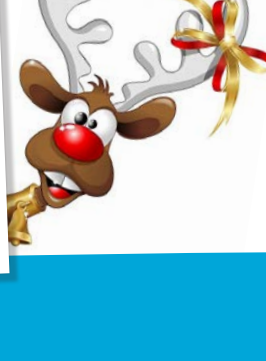
6. Keep the gates shut and your eyes open!

PLEASE DON'T prop open pier gates – even for a moment. And be vigilant of strangers around the piers especially those asking to be let through the gates. A friendly query can tell you a lot. Particularly with people you don't recognise – and if you still have doubts, report their presence to us. A little extra trouble might just avoid trouble!

6. Double check your mooring lines

And for those staying home Summer weather can be wild. Please check your mooring lines. Don't be satisfied with anything second rate. Renew, upgrade. A basic precaution that could save you a lot of grief!

*Our best wishes for a very safe & happy
Christmas – and holiday boating*



Marina & Boatyard Holiday Operating Hours

Customer Services:

The Customer Services Office on the boatyard is open every day throughout the holiday period in normal office hours

Marina Office and Travelift:

Until Thursday	21	Dec	Normal hours
Friday	22	Dec	8.00 to 12noon
Sat - Tues	23 - 26	Dec	Closed
Wed - Fri	27 - 29	Dec	8.00am to 5.00pm
Sat - Tues	31 - 2	Dec - Jan	Closed
Wednesday	3	Jan	Normal Hours resume

Boatyard:

Allvo Marine	Closes 22nd Dec	Re-opens 8th Jan
BoatSpray	Closes 22nd Dec	Re-opens 8th Jan
Bryant Marine	Closed statutory holidays only	
Doyle Rigging	Closes 22nd Dec	Re-opens 8th Jan
Howick Upholstery	Closes 22nd Dec	Re-opens 8th Jan
HMB Electrical	Closed statutory holidays only	
Steelliotts	Closes 22nd Dec	Re-opens 8th Jan
The Boat Builder	Closes 22nd Dec	Re-opens 8th Jan

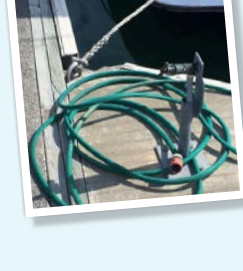
Important Housekeeping Matters:

1 Sorry – no gear on the pier please!

The increasing number of items are being stored on the piers - hoses in particular – is concerning. Potential trip hazards are a significant Health & Safety risk. If you have anything stored on your pier please remove it. Marina Security will be following up.

2 WARNING - New pier trolley fault

Fishermen beware! A design fault has been noted in the new pier trolley being trialled over the summer. Your rods could be in serious danger standing upright in the holders as you move through the gates. Please be careful how you carry rods!



3 Electrical Upgrade – Shore power connection

Progress continues on upgrading the electrical modules to meet latest regulations. Please note there are only two approved methods to connect to shore power:

a) A Temporary Connection to a single appliance.

b) A Shore Power Connection to the boats hard wired electrical system.

We will be in touch with those where we do not hold current documentation on file. Shore power leads with yellow or red tags advise our Security that relevant documentation is on file.



TOP CATCH Fishing Supplies

NORMAL SUMMER HOURS	HOLIDAY HOURS
Monday – Friday 6.30am to 6.00pm	Christmas Day 25th Dec Closed
Saturday 5.30am to 5.00pm	Boxing Day 26th Dec Open
Sunday 5.30am to 4.00pm	New Year's Day 1st Jan Normal hours



New taste in town



...yummy

Owned and run by Darko Jelavic and his family, we welcome Cinnamon Café which replaces A & J Café on the western end of the Promenade Building. Darko invites you to pop in and try the coffee and delicious food from the menu where the

'All Day Breakfast' features some classic European touches like Croque Madame. Yummm. Darko's special promise "We won't serve you anything we wouldn't consume ourselves"



Spirit of New Zealand Voyages

(continued from cover)

Six lucky youngsters will be selected for 2018 voyages ...

Three boys and three girls will be drawn from all applications received. The voyages, can then be chosen from the sailing schedule to best suit your calendar. Get all the information you need from the website : www.spiritofadventure.org.nz

• Nominators must have a relationship with the Marina such as berth-holder, trailer-park renter or commercial tenant.

• The Nominee must agree to the conditions set by Spirit of New Zealand Trust, details of which can be viewed on the website.

Participants must

- Be aged between 16-18 years (not over 18 on sailing date).
- Meet the medical criteria for voyagers
- Agree to the code of conduct / terms and conditions of the voyage



VOYAGE APPLICATION Spirit of New Zealand 2018 Youth Voyages

My Nominee is:

Name:

Address:

Phone: Email:

School:

Date of birth:

Gender : Male ☐ Female ☐

Ethnic group: European NZ / Maori / Samoan / Cook Island Maori / Tongan / Chinese / Indian *Please circle*

Date of birth:

Nominator:

Name:

Marina connection:

Contact phone: (Berth-holder, Business etc)

I confirm my nominee will fulfill the Spirit of Adventure Trust Conditions

Signed:

Applications are required to be received, on the application form, at the Marina Administration Office by **Monday 20th December 2017.**